



Coal Industry Development in Russia's East

Alexander Sokolov

Korea – Russia Energy Cooperation Conference

December 17, 2004

Seoul, Republic of Korea

East Siberia and Far East





Direct-use fuel consumption

MTCE*

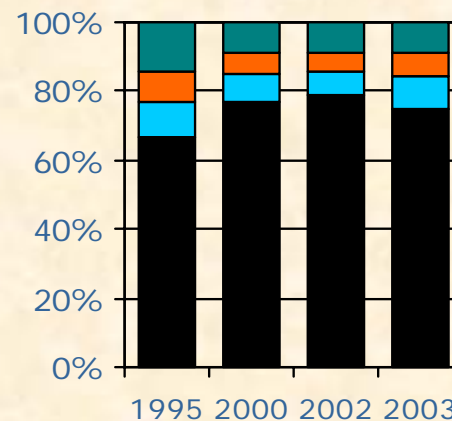
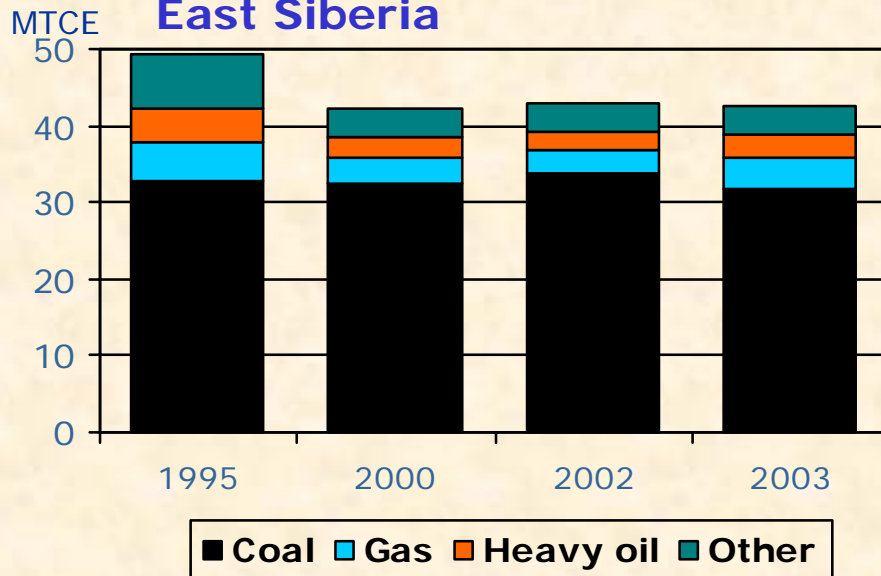
Energy resources	Years			
	1995	2000	2002	2003
East Siberia				
Direct-use fuel	49.2	42.1	43.8	42.6
Including: Coal	32.7	32.3	33.8	31.9
Gas	5.0	3.6	3.8	3.9
Heavy oil	4.4	2.6	2.5	3.0
Other fuel types	7.1	3.6	3.7	3.7
The Far East				
Direct-use fuel	30.8	22.8	23.6	24.5
Including: Coal	19.4	14.6	15.2	15.6
Gas	3.6	3.7	3.6	3.6
Heavy oil	4.9	3.3	3.4	3.6
Other fuel types	2.9	1.2	1.4	1.7

MTCE* - million ton coal equivalent

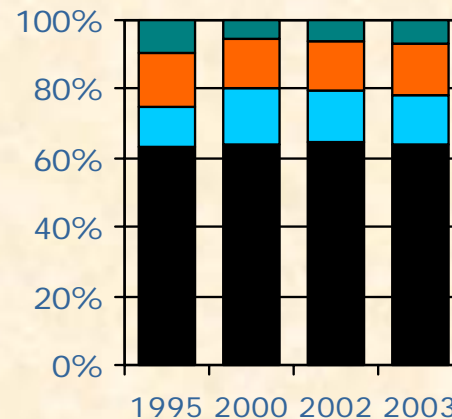
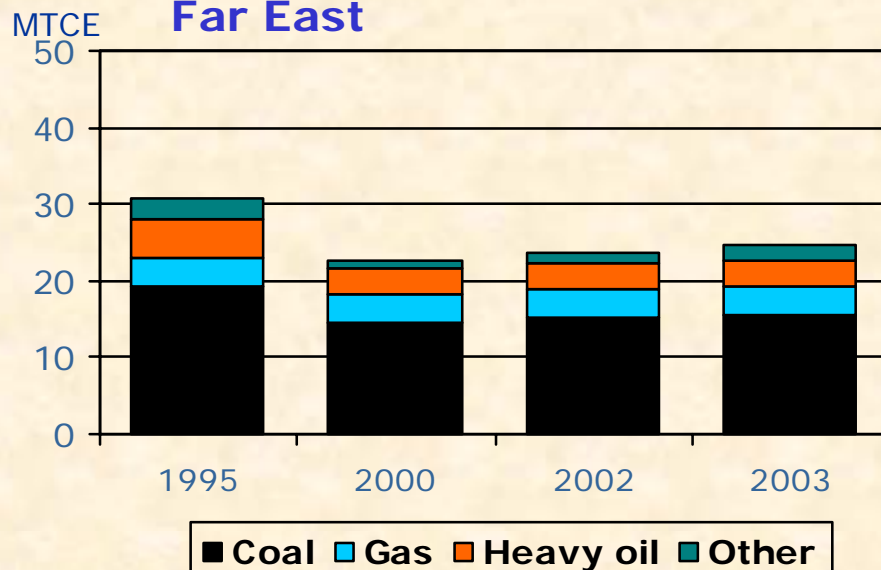


Direct-use fuel consumption

East Siberia



Far East



Coal consumption



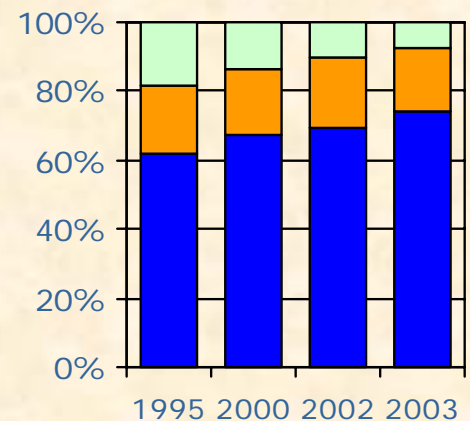
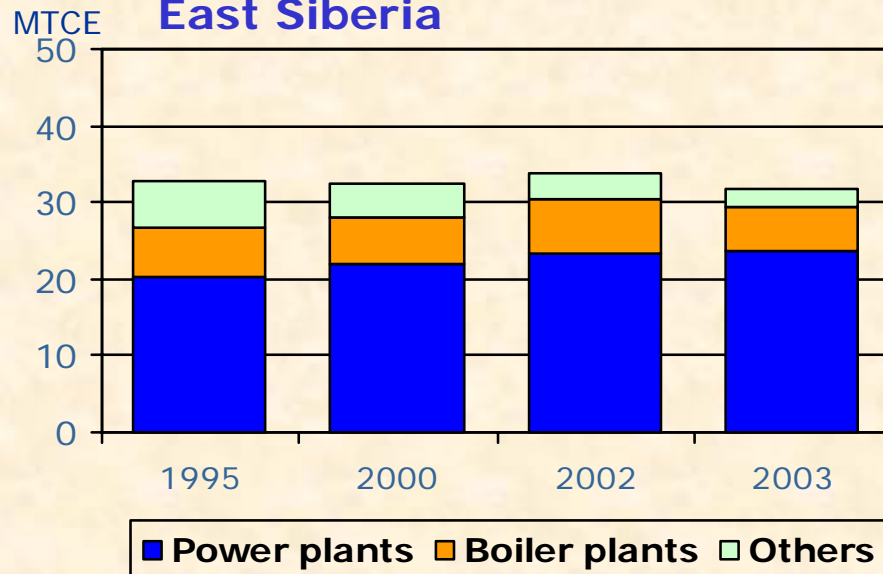
MTCE

Consumer	Years			
	1995	2000	2002	2003
East Siberia				
Direct-use fuel	32.7	32.3	33.8	31.9
Including: Power plants	20.3	21.9	23.4	23.7
Boiler plants	6.3	6.0	7.0	5.8
Others	6.1	4.5	3.4	2.4
The Far East				
Direct-use fuel	19.4	14.6	15.2	15.6
Including: Power plants	11.5	10.2	10.4	10.8
Boiler plants	4.9	3.6	4.1	4.3
Others	3.0	0.8	0.7	0.5

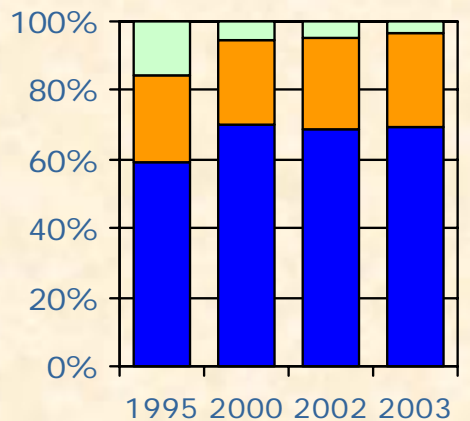
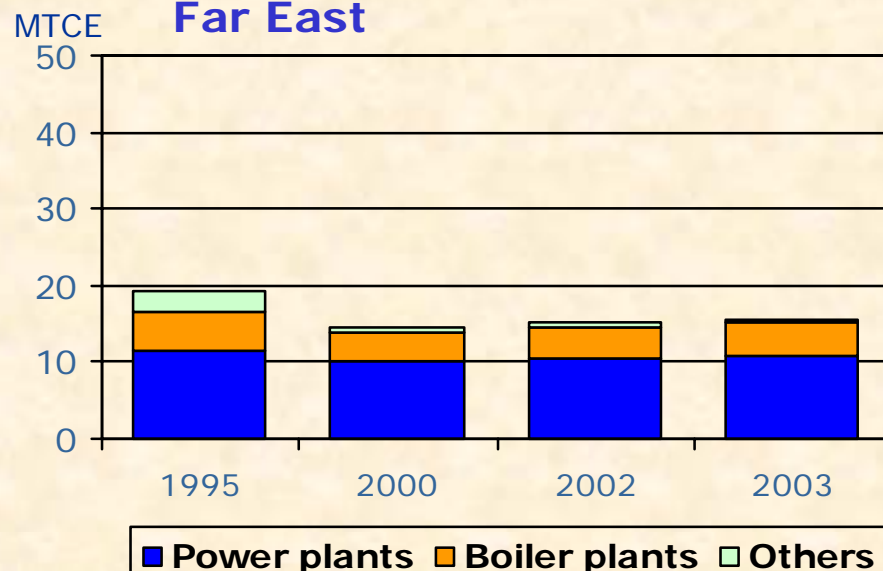


Coal consumption

East Siberia



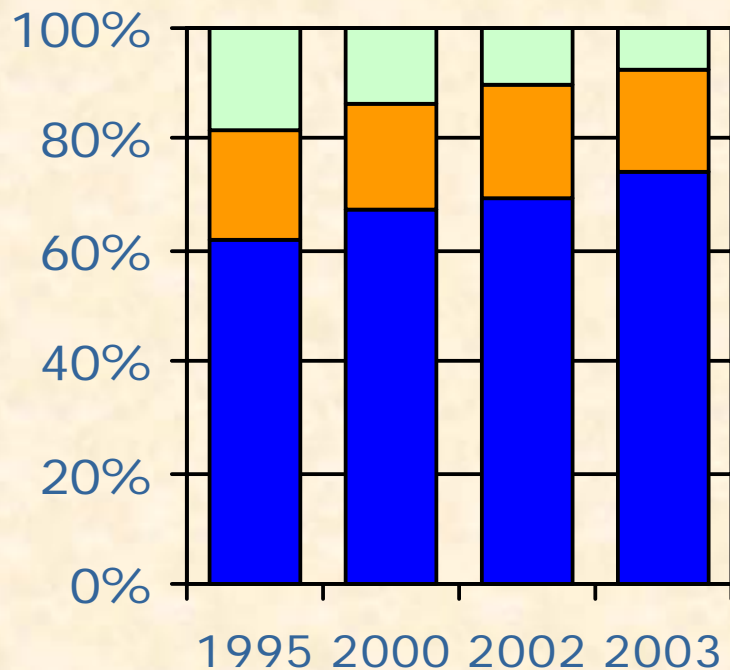
Far East





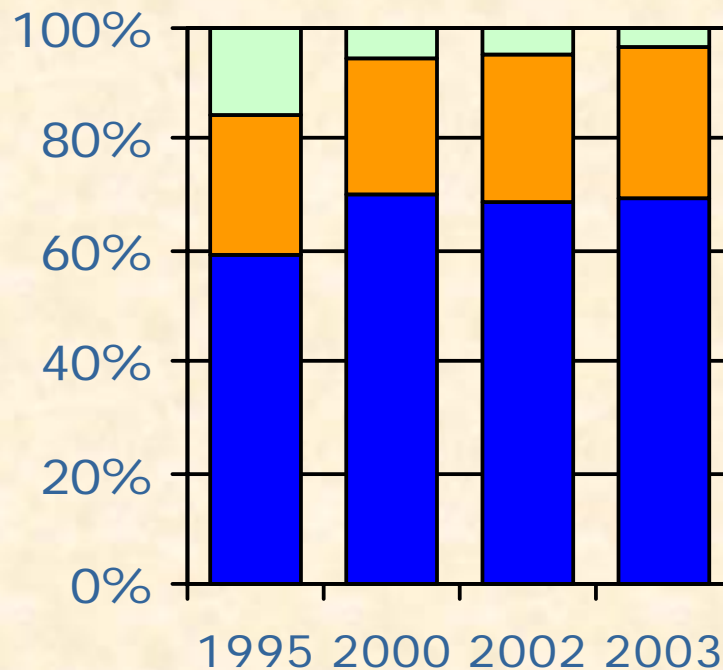
Coal consumption

East Siberia



■ Power plants ■ Boiler plants ■ Others

Far East



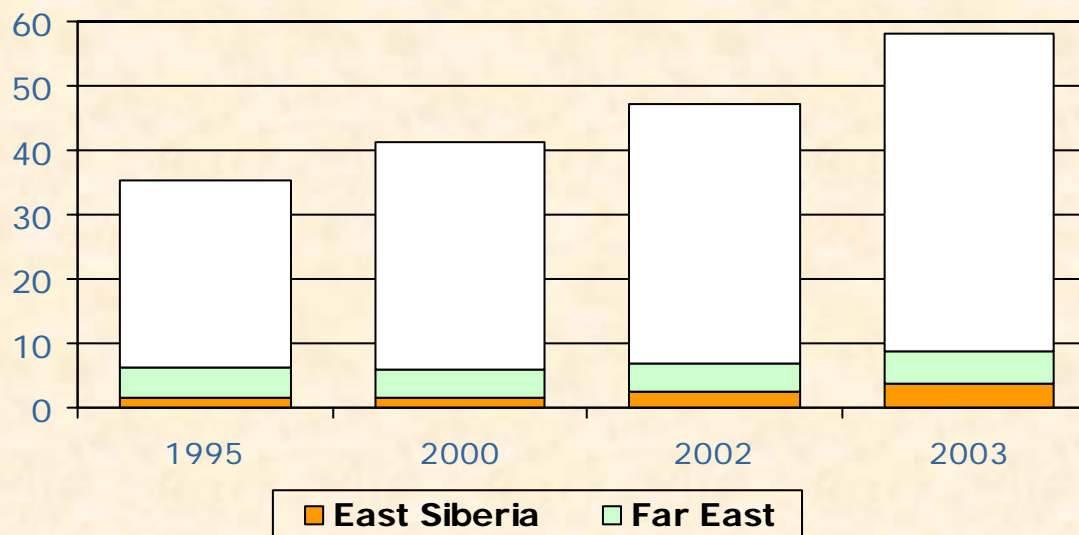
■ Power plants ■ Boiler plants ■ Others



Coal export

mln t/year

Country, regions	Years			
	1995	2000	2002	2003
Russia, total	35.4	41.4	47.1	58.1
East Siberia	1.7	1.6	2.4	3.6
Far East	4.4	4.4	4.5	5.1





Relation between explored and hypothetical coal reserves

	Hypothetical recourses, bln t	Explored balance reserves (category A+B+C ₁), bln t	Relation between reserves and recourses, %
Russia, total	4451 (100%)	200.6 (100%)	4.5
East Siberia	2410 (54%)	67.4 (34%)	2.8
Far East	1244 (28%)	19.1 (9.5%)	1.5

Coal production



mln t

Coal	Years			
	1995	2000	2002	2003
East Siberia				
Total	71.6	79.2	66.6	75.7
Kansk-Achinsky	30.6	40.1	32.8	35.9
Azeisky	9.7	11	9.3	8.7
Tugnuisky	2.2	3.7	3.6	4.0
Chitinsky	12.5	14.5	10.4	12.1
Others	16.6	9.9	10.5	15.0
The Far East				
Total	33.8	24.4	29.8	30.5
Neryungrinsky	9.8	9	8.8	8.3
Including that coking	4.1	4	4.7	5.2
Raichikhinsky	4.6	2.2	2.5	2.6
Primorsky	5.6	4.7	4.2	4.8
Luchegorsky	5.2	5.6	6.5	6.3
Urgalsky	1.5	2	2.6	2.6
Sakhalinsky	2.5	2.8	3.2	2.7
Others	0.5	2.5	2.0	3.2

Balance and active coal reserves

bln t

Coal type	Balance reserves by category (including active balance reserves)		
	A+B+C ₁	C ₂	Total A+B+C ₁ +C ₂
East Siberia			
Brown	51.3	21.7	73.0
Hard	16.1	10.1	26.2
incl. coking	2.9	1.0	3.8
Total	67.4	31.8	99.2
incl. active balance reserves:	47.1	18.7	65.8
- coking	1.4	0.0	1.4
- power-generating	45.7	18.7	64.4
- for open-pit mining	45.5	18.7	64.2
Far East			
Brown	12.0	7.9	19.9
Hard	7.2	5.9	13.1
incl. coking	4.3	2.7	7.0
Total	19.2	13.8	33.0
incl. active balance reserves:	14.8	6.5	21.3
- coking	0.7	0.1	0.8
- power-generating	14.1	6.4	20.5
- for open-pit mining	10.4	3.7	14.1



Direct-use fuel consumption forecast

MTCE

Consumer	Years				
	2003	2005	2010	2015	2020
East Siberia					
Direct-use fuel		51.1	59.6	66.2	72.1
Coal	31.9	36.2	45.2	48.2	55.8
Including: Power plants	23.7	25.1	33.3	34.9	41.7
Boiler plants	5.8	7.4	8.0	9.0	9.8
Others	2.4	3.7	4.0	4.3	4.3
The Far East					
Direct-use fuel		28.7	31.5	31.1	33.9
Coal	15.6	14.3	15.3	15.5	16.8
Including: Power plants	10.8	10.0	10.8	10.5	11.5
Boiler plants	4.3	3.6	3.8	4.1	4.3
Others	0.5	0.7	0.8	0.9	0.9

Coal production forecast



mln t

Coal	Years				
	2003	2005	2010	2015	2020
East Siberia					
Total	75.7	96	96.1	127.7	135.5
Kansk-Achinsky	35.9	49.9	63.9	73.1	79.9
Azeisky	8.7	12.7	14.6	14.6	14.6
Tugnuisky	4.0	5.7	6	8	8.9
Chitinsky	12.1	14.5	15.5	16	16
Others	15.0	13.3	16	16	16.1
The Far East					
Total	30.5	35	38.4	52.4	57.5
Neryungrinsky	8.3	8	8	10	10
Elginsky			3	15	20
Raichikhinsky	2.6	4.5	4.5	4.5	4.5
Primorsky	4.8	7.1	7.4	7.4	9.1
Luchegorsky	6.3	6.5	6.5	6.5	6.5
Urgalsky	2.6	2.9	2.9	2.9	2.9
Sakhalinsky	2.7	3.4	3.4	3.4	1.8
Others	3.2	2.6	2.7	2.7	2.7



Coal balance for East Siberia

MTCE

Coal	Years				
	2003	2005	2010	2015	2020
East Siberia					
Production		50.5	61.1	69.3	80.7
Supplies from the other regions		0.7	0.6	0.6	0.6
Resources to be distributed		51.6	62.5	67.7	73.2
Internal consumption		39.2	46.8	52.9	63.3
Supplies outside the region		11.3	14.3	16.4	17.4
Including: to the Far East		2.1	1.8	1.6	1.6
for export		1.4	1.4	1.7	2.9

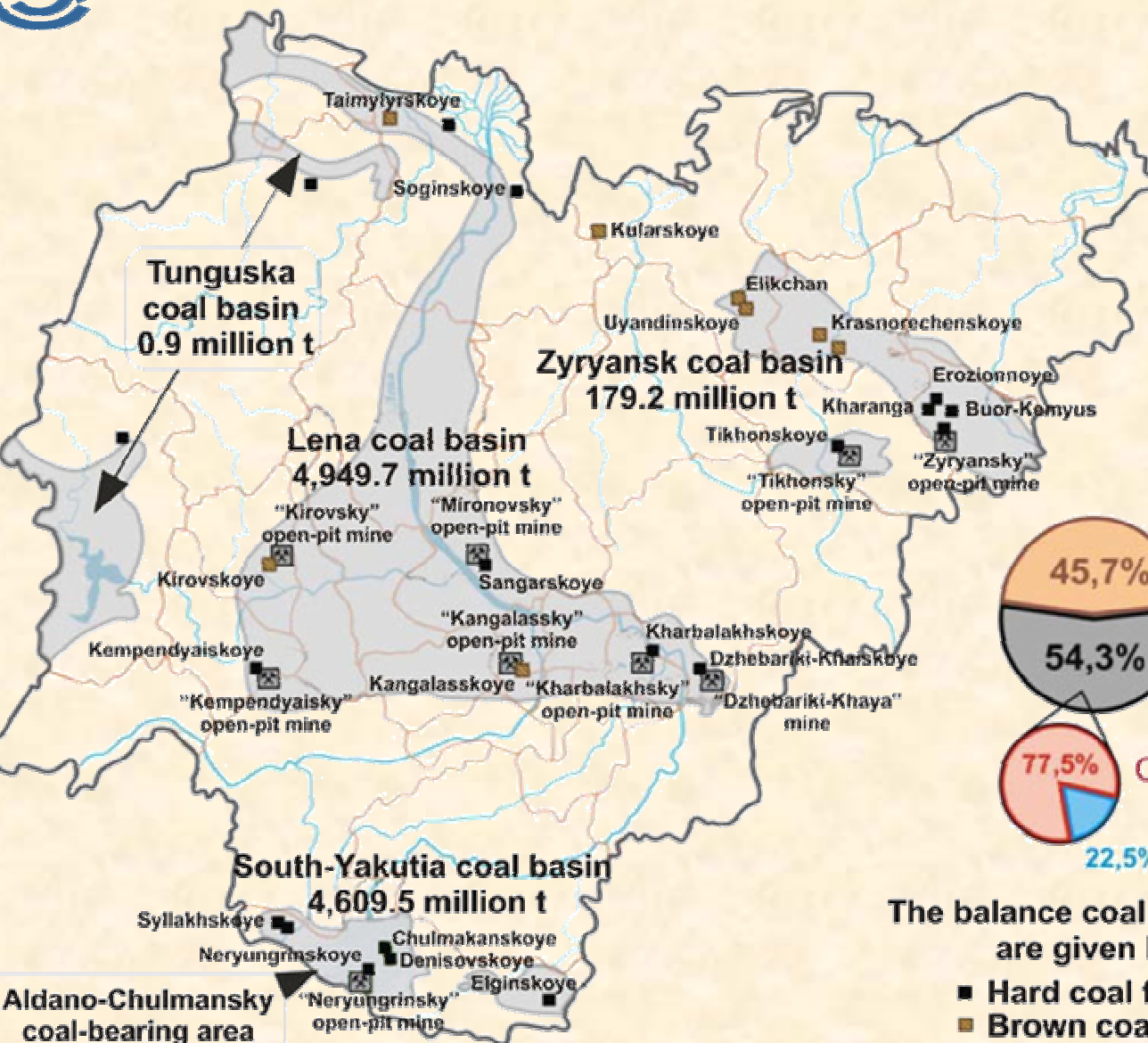


Coal balance for East Siberia

MTCE

Coal	Years				
	2003	2005	2010	2015	2020
Far East					
Production		19.9	25.6	33.9	39.8
Supplies from the other regions		2.1	1.8	1.6	1.6
Resources to be distributed		22.0	29.3	37.2	41.8
Internal consumption		14.3	15.3	15.5	16.8
Supplies outside the region		7.7	12.1	20	24.6
Including: for export		2	5.4	15	19

Coal industry of Republic of Sakha (Yakutiya)



Speculative coal resources of Sakha Republic (Yakutiya) (of categories P1+P2+P3) as of 01.01.2001

923.8 billion t

Balance coal resources of Sakha Republic (Yakutiya) (of categories A+B+C1) as of 01.01.2003

9,772 billion t

Including:



The balance coal reserves of categories A+B+C1 are given by basin as of 01.01.2003

- Hard coal field
- Brown coal field
- Coal mining

Perspective projects in East Siberia and Far East



Perspective coal deposits

■ Elegestkoye

Sea ports

★ Nakhodka

Vostochny



***THANK YOU FOR
ATTENTION***